



PERFORATED SHEET  
THK: 1.2 mm  
MAT. SS 304

MINERAL WOOL

6 THK

CERAMIC BLANKET

Dimensions: 82400, 82075 (OD), 937.5, 250, 230, 2611, 1550, 1011, 2854, 400, 250

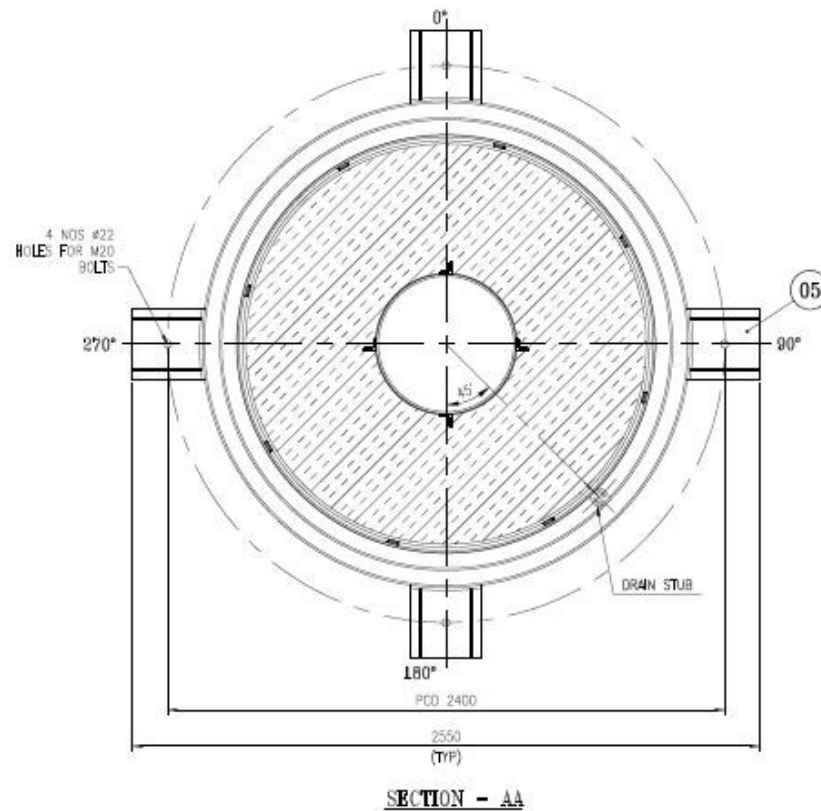
Labels: 01, 02, 03, 04, 05, 06, 07, 08, 09, 10, 11, 12, N1, N2

- 1) Basic design and detail engineering of silencers based on IFFCO specifications.
- 2) Fabrication and supply of silencer.



# Aspire Engineering Services Private Limited

## DESIGN



### MATERIAL OF CONSTRUCTION

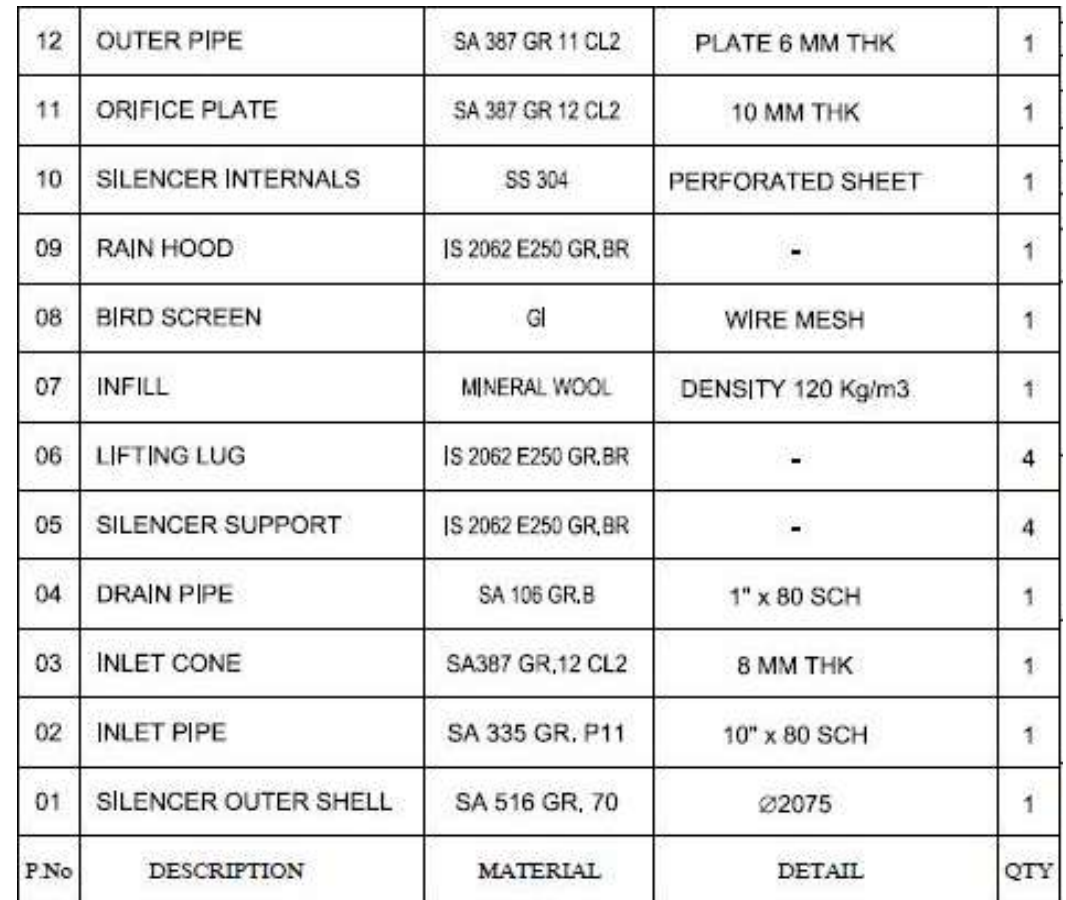
DESCRIPTION	MATERIAL
* SHELL	: SA 516 GR. 70
* PAD FOR OUTER SLEEVE	: IS 2062 E250 GR.BR
* DIFFUSER PIPE	: SA 387 GR 11 CL2
* DRAIN PIPE	: SA 106 GR.B
* SUPPORT	: IS 2062 E250 GR.BR
* CONE	: SA 387 GR 11 CL2
* STUD FOR SLIDING ARRANGEMENT	: IS 1363
* NUTS FOR SLIDING ARRANGEMENT	: IS 1363
* RAIN HOOD	: IS 2062 E250 GR.BR
* BIRD SCREEN	: GI
* PERFORATED SHEET	: SS 304
* SETTING BOLT	: IS 1363

### INLET DIFFUSER (N1):-

1. CODE OF CONSTRUCTION	: ASME SEC VIII DIV. 1 EDITION 2021
2. DESIGN PRESSURE [INTERNAL]	: 70 kg/cm <sup>2</sup> (g)
3. DESIGN TEMPERATURE (MIN./MAX.)	: 500° C
4. CORROSION ALLOWANCE	: 3 mm
5. RADIOGRAPHY (RT)	: FULL
6. JOINT-EFFICIENCY	: 100%
7. PWHT-EFFICIENCY	: NO

### SILENCER WEIGHT DETAILS:

1. EMPTY WEIGHT	: 2800 Kgs.
2. LIFTING WEIGHT	: 3360 Kgs.
3. OPERATING WEIGHT	: 3425 Kgs.







# Aspire Engineering Services Private Limited

---

## MANUFACTURING AND SUPPLY

