

2 X 342 MW OPEN CYCLE GAS TURBINE (OCGT) GENERATING STATION IN SINGAPORE

Client: JEL Maintenance Limited (JML), Singapore

Project: Meranti Power Pte Ltd

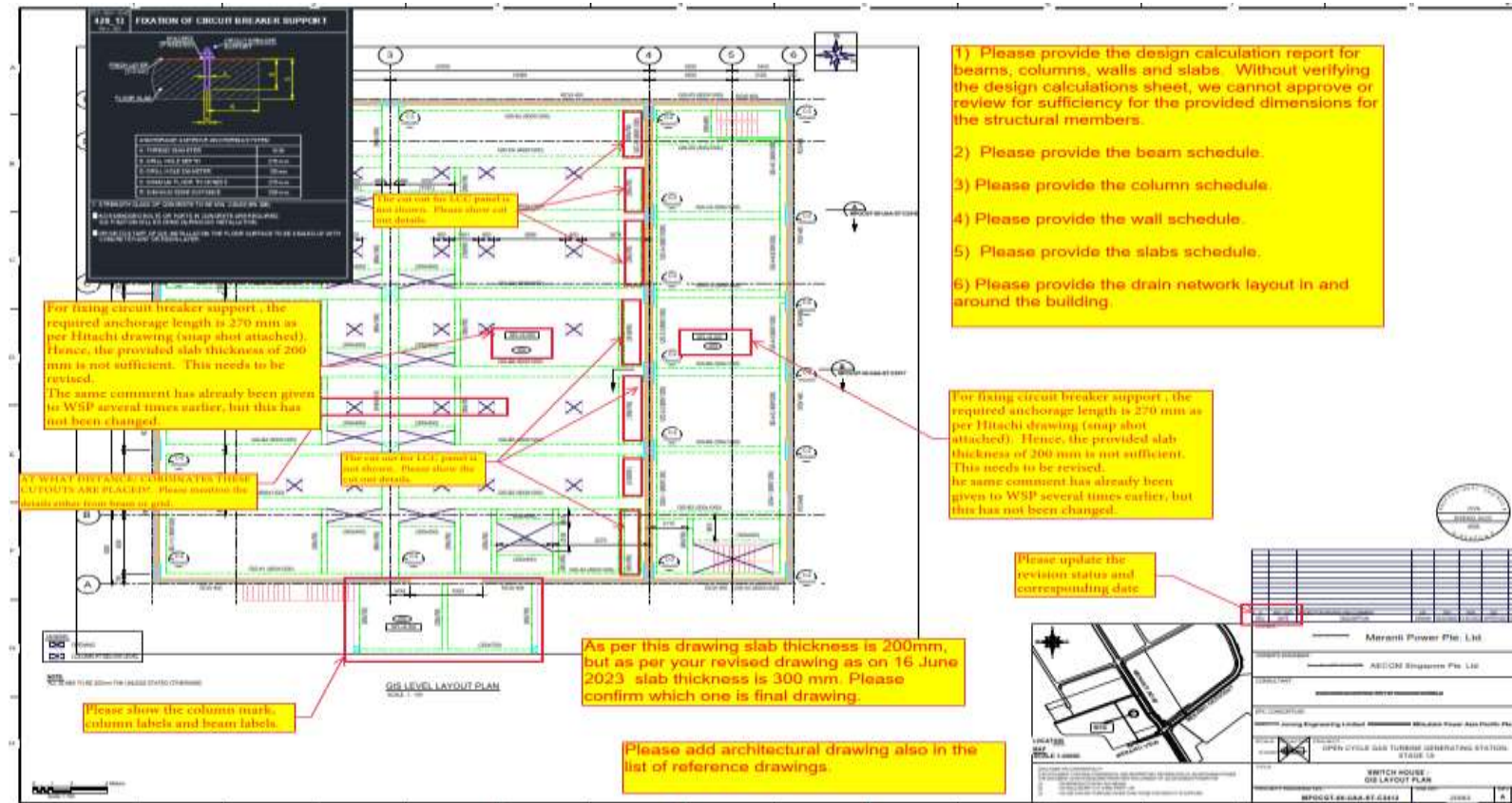
Scope Of Work: Reviewing the design of the following structures:

- Gas Turbine Building
- Switch House Building
- Gas conditioning Building
- Common Electrical Building
- EDG and BSDG Building
- Admin Building
- Warehouse and Maintenance Building
- Unit Electrical Building
- DG Electrical Building
- Bin Center
- Fire Pump Station
- Water Tank
- Diesel Oil Tank
- GSIV Emergency
- Scrap Center and Guard house

2 X 342 MW OPEN CYCLE GAS TURBINE (OCGT) GENERATING STATION IN SINGAPORE

Client: JEL Maintenance Limited (JML), Singapore

Project: Meranti Power Pte Ltd

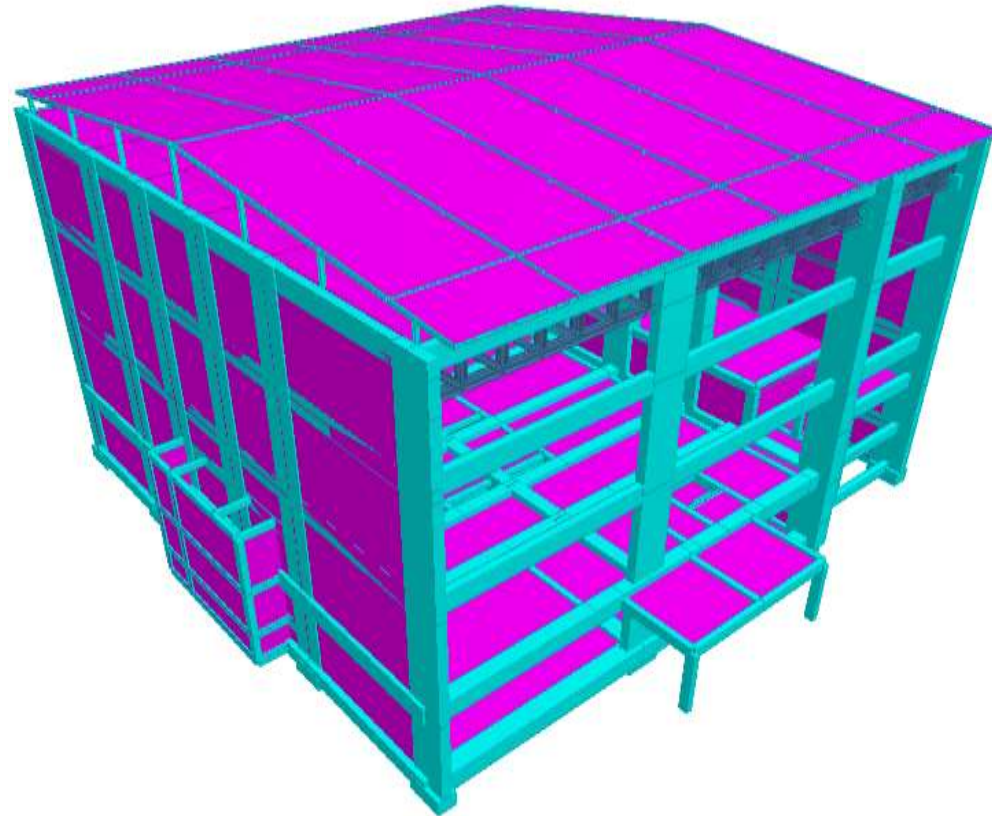


Switch House Building Reviewed Document

2 X 342 MW OPEN CYCLE GAS TURBINE (OCGT) GENERATING STATION IN SINGAPORE

Client: JEL Maintenance Limited (JML), Singapore

Project: Meranti Power Pte Ltd



Switch House Building Model